

Attachment A. Maps showing the location of the Harlan County CBC

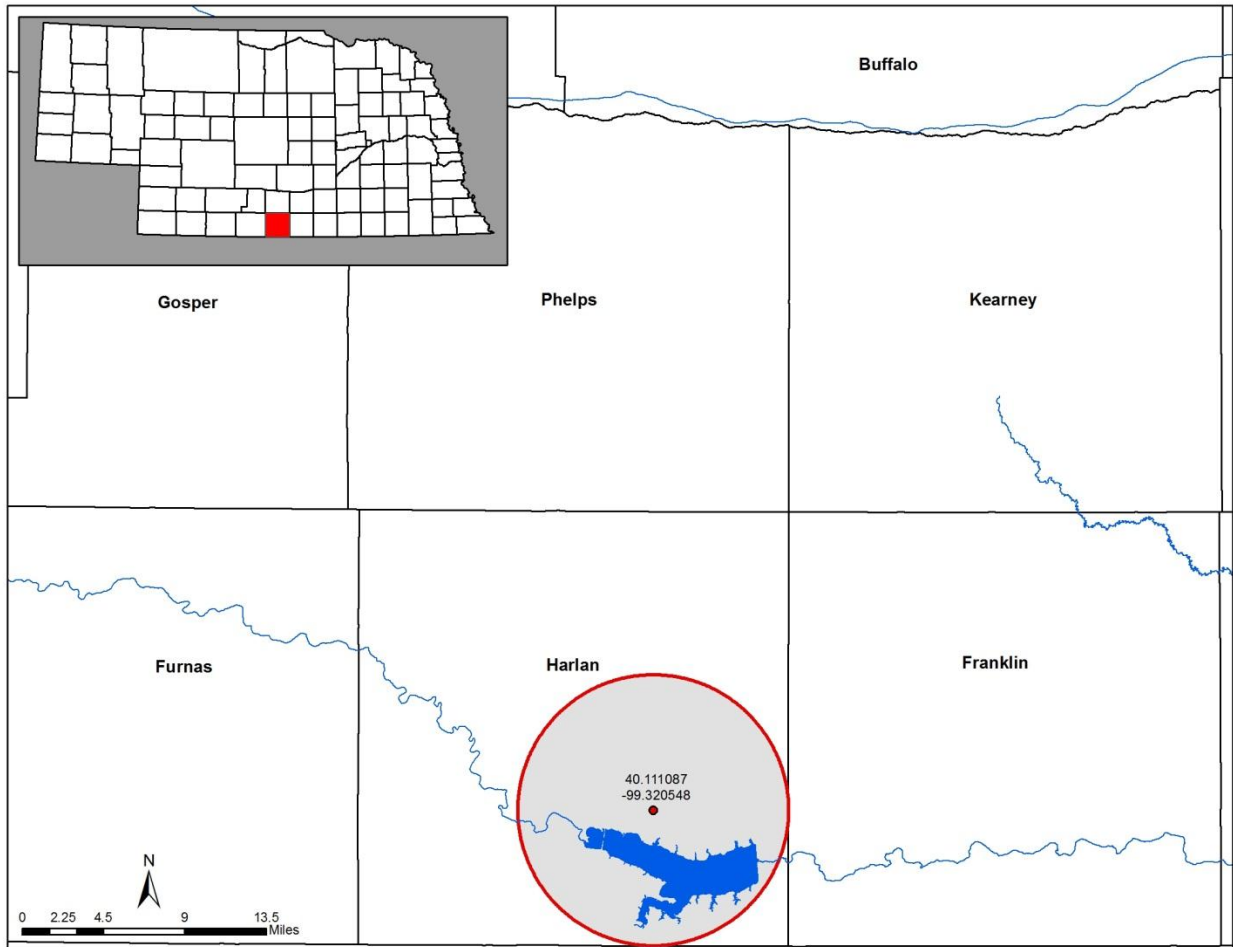


Figure 1. General location of the CBC circle with Harlan County Lake shown.

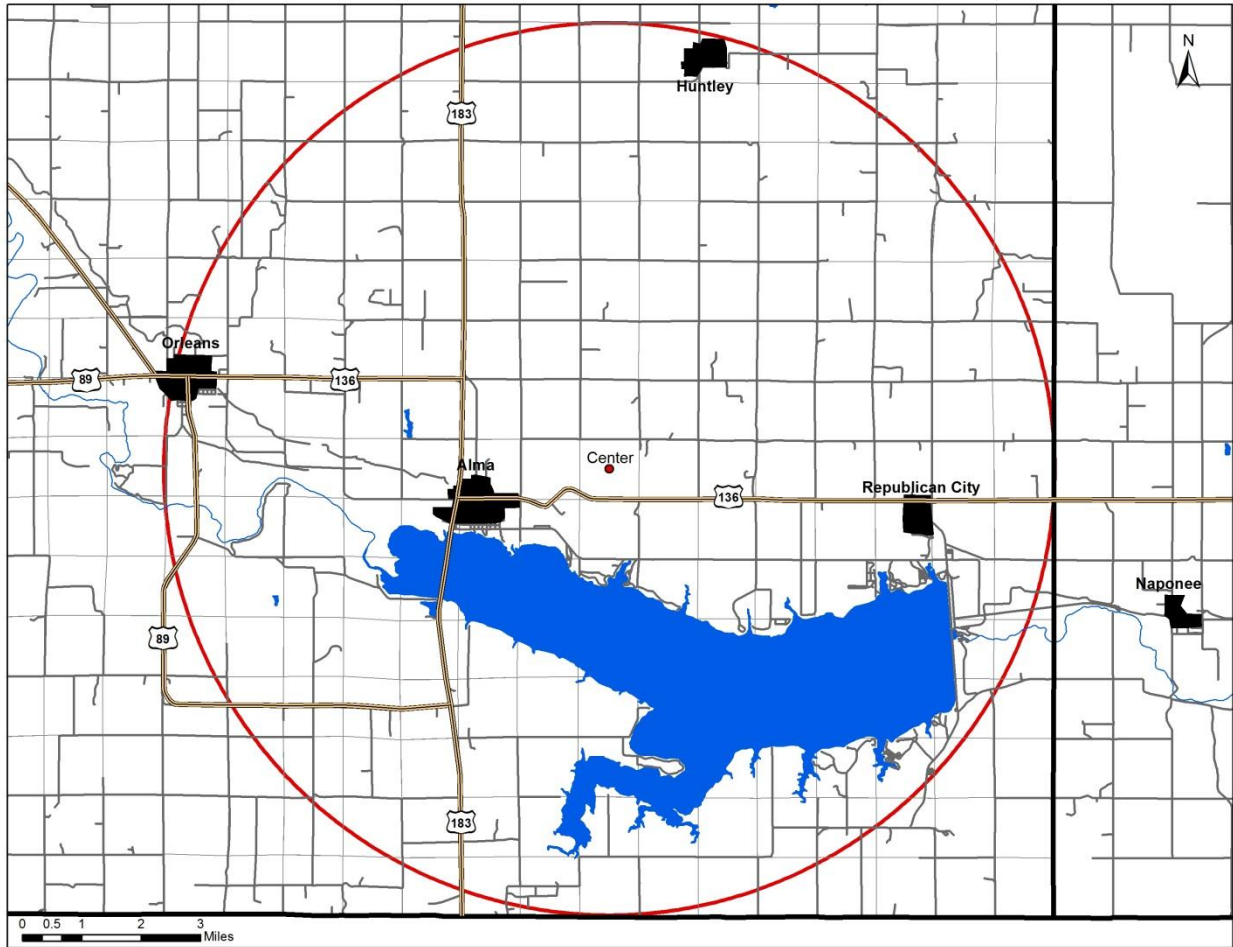


Figure 2. Harlan County CBC circle with

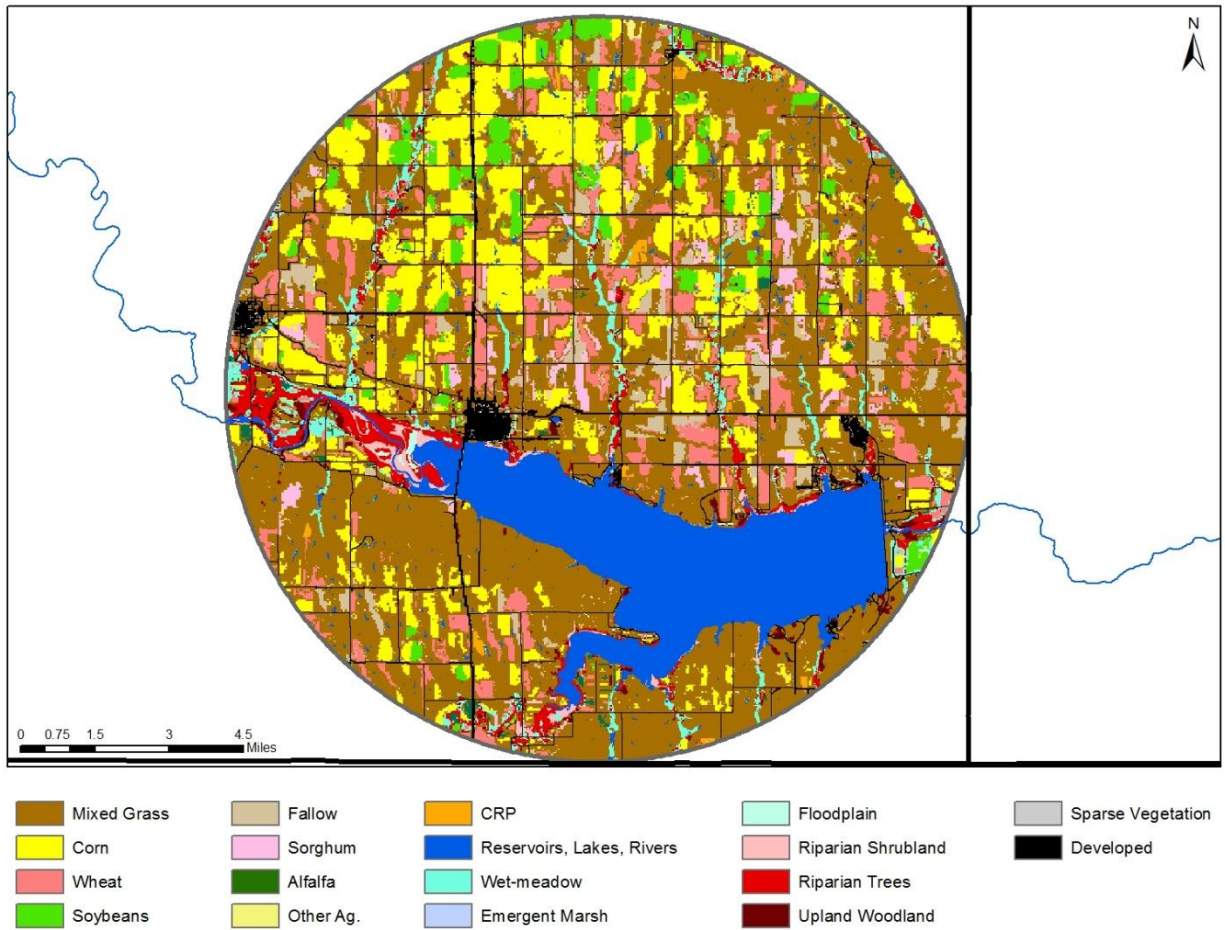


Figure 3. Harlan County CBC circle showing principal land covers or uses. Data based on 2006 aerial photographs and generated by the Rainwater Basin Joint Venture.